

上海乐伯宁科技有限公司
不干胶标签自动贴标
解决方案

相关产品及配件信息，请联系客服咨询。

信守承诺 | 追求卓越

服务热线 | 021-57671566

目录 contents

LEBONING MACHINE

突破自我 跨越新生
勇于创新 不断进取

1

公司简介 | Introduction

2

产品目录 | Product Catalog

03	Y-750 贴标机 回转立式圆瓶贴标机	Y-750 Automatic Labeling Machine Rotary Vertical Round Bottle Labeling Machine
05	Y-700 贴标机 回转立式圆瓶贴标机	Y-700 Automatic Labeling Machine Rotary Vertical Round Bottle Labeling Machine
07	Y-510 贴标入托一体机 分托、卧式贴标及入托功能一体机	Y-510 Automatic Labeling And Tray All-In-One Machine Tray Separation, Horizontal Labeling And Bottles Into Tray All In One Machine
09	Y-500 贴标机 带防护罩卧式圆瓶贴标机	Y-500 Automatic Labeling Machine Horizontal Round Bottle Labeling Machine With Protective Cover
11	Y-500 贴标机 卧式圆瓶贴标机	Y-500 Automatic Labeling Machine Horizontal Round Bottle Labeling Machine
13	Y-400 贴标机 直线立式圆瓶贴标机	Y-400 Automatic Labeling Machine Linear Vertical Round Bottle Labeling Machine
15	Y-200 贴标机 立式圆瓶定点定位贴标机	Y-200 Automatic Labeling Machine Vertical Cylindrical Bottle Fixed Point Positioning Labelling Machine
17	P-280 贴标机 扁瓶、方瓶及异形瓶平面贴标机	P-280 Automatic Labeling Machine Labeling Machine For Flat Bottles, Square Bottles And Special-Shaped Bottles
19	P-260 贴标机 带防护罩纸盒折角贴标机	P-260 Automatic Labeling Machine Carton Corner Labeling Machine With Protective Cover
21	P-260 贴标机 纸盒折角贴标机	P-260 Automatic Labeling Machine Carton Corner Labeling Machine
23	P-120 贴标机 带防护罩 BFS 贴标机	P-120 Automatic Labeling Machine BFS Labelling Machine With Protective Cover

3

产品配件 | Parts

携手并进 共创美好未来



上海乐伯宁科技有限公司是一家专业研发、生产高速贴标机及全自动高速套标机等设备的企业，拥有 20 年专业技术，公司所生产的设备以稳定性高、速度快、精度高、故障率低、操作简单为著称，所生产设备均符合 GMP、CGMP、FDA 等规范要求，公司产品质量依据 ISO:9001 的要求标准设计、生产。公司根据客户不同的产品结合客户 URS 进行规范的设计、制造。

公司主要研发、生产高速贴标机及全自动高速套标机等设备共 30 多款机型，广泛应用于药品、食品、化妆品、电子产品、工业产品、文具及其它日常生活用品等的包装应用，为各行业设计独特的包装设备解决方案。我们以专业的技术为基础，以高质量的产品为保障，为客户提供最可靠、最完善的设备及全方位的服务，进而与客户达成双赢目标。

Shanghai Leboning Technology Co., Ltd. specializes in the research, development and production of high-speed labeling machines and fully automatic high-speed shrink sleeve labeling machine with 20 years of professional technology. Our machine is well known for the high stability, fast speed and good accuracy, low failure rate and simple operation, and complies with GMP, CGMP, FDA and other regulatory requirements, it is designed and produced in accordance with the requirements of ISO 9001. Our company carries out standardized design and manufacturing based on customer's URS for different products.

We develop and produce more than 30 kinds of high-speed labeling machines and fully automatic high-speed trapping label machines, which are widely used in packaging applications for medicines, food, cosmetics, electronic products, industrial products, stationery and other daily necessities and etc., designing unique packaging machine solutions for various industries. Based on professional technology and high-quality guarantee, we provide the most reliable machine and all-round services, thereby achieving a win-win goal with customers.





Y-750 贴标机

回转立式圆瓶贴标机

Y-750 Automatic labeling machine
Rotary Vertical Round Bottle Labeling Machine

功能描述 | Machine Description

- 专用于圆瓶的立式高速贴标使用，包括安瓿瓶、卡式瓶与口服液瓶等。
- 配置不良品检测机构时，通过星盘分流的方式剔除不良品，星盘分流的原理为正压吸附，结构简单也不易堵塞管路，保证使用稳定性的同时简化了日常维护。
- 贴标主机头为三段式设计，分别为供标、拉标和底纸回收机构，每个机构都由单独的电机控制，确保标签传送的快速与稳定，最快出标速度能达到 95m/min，且出标精度能达到 ±0.5mm。
- 星盘机构的主传动为齿轮传动，同时采用了齿轮消除技术，即可保证传动精度，也能确保长期使用的稳定性与维护性。
- 轮附皮带采用同步带包海绵，运行速度平稳且缓冲性能好，能使标签附着更加牢固且不易破瓶。
- 触控式人机操作界面，出现异常可在人机界面上显示并引导故障排除，操作简单，任何人皆可快速使用本设备。具备配方选择及保存功能，更换不同规格产品时无需重新设定，直接调用配方即可，大大提高工作效率。

- The machine is designed for vertical high-speed labeling on round bottles, including ampoules, cartridge bottles, and oral liquid bottles.
- If the machine is equipped with unqualified products detection system, it will reject the unqualified products by star wheel. The star wheel rejection device is working by positive pressure suction principle. The device structure is simple and reduces the risk of block the machine which guarantees the stable running of the machine and simplified the maintenance.
- The labeling main head is three-stage device design, which is feed label device, drag label device and paper collection device. Each device is controlled by an independent motor to ensure fast and stable label transmission. The maximum label out-feed speed can be 95 m/min. The labeling accuracy can get ±0.5 mm.
- The main drive of the star wheel device is gear drive. It adopts the gear anti-backlash technology to ensure the transmission accuracy, and also to ensure long-term stability and maintenance.
- The change parts like star wheel, dial wheel and guard rail are all installed with locating pin. When change the formats user no need adjusts the position, which is fast and convenient.
- The spoke-wheel belt adopts the synchronous belt wrap sponge, which is running smooth with good buffering performance, It can make the label attachment firmer and reduce the risk to break the bottle.
- With touch screen interface. The abnormal can be displayed on the HMI interface and guide troubleshooting. The operation is simple and anyone can quickly learn and use the machine. It is equipped with recipe selection and saving functions, there is no need to reset any parameters when change formats, and the recipe can be directly invoked, greatly improving work efficiency.



常用适用瓶型
Commonly used bottle type

技术参数 | Technical Parameters

贴标机主要参数 Labeling machine technical parameters			
适用瓶子直径 Bottle diameter	Ø10-24 mm	压缩空气耗气量 Compressed air consumption	0.5 MPa, 500 L/min
适用瓶型 Bottle type	安瓿瓶、口服液瓶及西林瓶等小圆瓶 Ampoule, oral liquid bottle, vial and etc.	总重量 Total weight	450 kg
贴标速度 Labeling speed	0-650 瓶 / 分 0-650 bottles/min	标准设备外形尺寸 (L*W*H) Overall size (L*W*H)	2381*2104*2104 mm
贴标精度 Labeling accuracy	±0.5 mm (包材误差除外) ±0.5 mm (excluding packaging error)	防护罩材质 Protective cover material	可选亚克力或钢化玻璃 Acrylic or tempering glass
贴标合格率 Labeling pass rate	> 99.99%	适应标签材质 Label material	透明标签、铜板纸及 PE 等 Transparent label, coated paper, PE and etc.
电源 Power supply	AC220 V, 50 Hz/60 Hz	适应标签卷内径 Label roll inner diameter	Ø76 mm
功率 Power	5 kW	最大标签卷外径 Max. label roll outer diameter	Ø400 mm



设备特点 | Machine Feature



星盘机构
Star wheel device

回转式星盘
Rotating star wheel

人工收料平台
Manual receiving platform

贴标主机头
Labeling head



Y-700 贴标机

回转立式圆瓶贴标机

Y-700 Automatic labeling machine

Rotary Vertical Round Bottle Labeling Machine

功能描述 | Machine Description

- 适用于各种规格西林瓶、糖浆瓶等圆瓶的立式贴标使用。
- 配置不良品检测机构时，通过星盘分流的方式剔除不良品，星盘分流的原理为正压吸附，结构简单也不易堵塞管路，保证使用稳定性的同时简化了维护。
- 贴标主机头为三段式设计，分别为供标、拉标和底纸回收机构，每个机构都由单独的电机控制，确保标签传送的快速与稳定，最快出标速度能达到 95m/min，且出标精度能达到 ±0.5mm。
- 采用双道进料技术，通过两个拨轮将产品拨送至星盘机构后汇合成一道，替代了分瓶螺杆，提高了进料效率，更换规格时也更快速方便，且不易出现卡瓶、缺瓶和破瓶等异常现象，确保设备稳定运行。
- 星盘机构的主传动为齿轮传动，同时采用了齿轮消除技术，即可保证传动精度，也能确保长期使用的稳定性与维护性。
- 触控式人机操作界面，出现异常可在人机界面上显示并引导故障排除，操作简单，任何人皆可快速使用本设备。具备配方选择及保存功能，更换不同规格产品时无需重新设定，直接调用配方即可，大大提高工作效率。

- The machine is designed for vertical labeling on round bottles, including vials and syrup bottles of various specifications.
- If the machine is equipped with unqualified products detection system, it will reject the unqualified products by star wheel. The star wheel rejection device is working by positive pressure suction principle. The device structure is simple and reduces the risk of block the machine which guarantees the stable running of the machine and simplified the maintenance.
- The labeling main head is three-stage device design, which is feed label device, drag label device and paper collection device. Each device is controlled by an independent motor to ensure fast and stable label transmission. The maximum label out-feed speed can be 95 m/min. The labeling accuracy can get ±0.5 mm.
- Using dual-channel feeding technology, the bottles are fed to the star wheel device through two dial wheels and then merged together, replacing the bottle dividing screw auger, which improves the feeding efficiency, and it is also faster and more convenient when changing format. In this way, the jamming, missing, and breakage of the bottles are highly reduced, and the machine could be running much more stable.
- The main drive of the star wheel device is gear drive. It adopts the gear anti-backlash technology to ensure the transmission accuracy, and also to ensure long-term stability and maintenance.
- With touch screen interface. The abnormal can be displayed on the HMI interface and guide troubleshooting. The operation is simple and anyone can quickly learn and use the machine. It is equipped with recipe selection and saving functions, there is no need to reset any parameters when change formats, and the recipe can be directly invoked, greatly improving work efficiency.



常用适用瓶型
Commonly used bottle type



技术参数 | Technical Parameters

贴标机主要参数 Labeling machine technical parameters			
适用瓶子直径 Bottle diameter	Ø16-42.5 mm	压缩空气耗气量 Compressed air consumption	0.6 MPa, 500 L/min
适用瓶型 Bottle type	西林瓶、糖浆瓶及塑料圆瓶等 Vial, syrup bottle, plastic round bottle and etc.	总重量 Total weight	500 kg
贴标速度 Labeling speed	0-700 瓶 / 分 0-700 bottles/min	标准设备外形尺寸 (L*W*H) Overall size (L*W*H)	3508*1873*2109 mm
贴标精度 Labeling accuracy	±0.5 mm (包材误差除外) ±0.5 mm (excluding packaging error)	防护罩材质 Protective cover material	可选亚克力或钢化玻璃 Acrylic or tempering glass
贴标合格率 Labeling pass rate	> 99.99%	适应标签材质 Label material	透明标签、铜板纸及 PE 等 Transparent label, coated paper, PE and etc.
功率 Power	5 kW	适应标签卷内径 Label roll inner diameter	Ø76 mm
电源 Power supply	AC220 V, 50 Hz/60 Hz	最大标签卷外径 Max. label roll outer diameter	Ø400 mm

设备特点 | Machine Feature



回转式星盘
Rotating star wheel

工业相机检测机构
Industrial camera detection device

网带供料机构
Mesh belt feeding device

贴标主机头
Labeling head



Y-510 贴标入托一体机

分托、卧式贴标及入托功能一体机

Y-510 Automatic labeling and tray all-in-one machine
Tray Separation, Horizontal Labeling And Bottles Into Tray All In One Machine

功能描述 | Machine Description

- 专用于各种规格圆瓶的卧式贴标、分托及入托使用，包括西林瓶、安瓿瓶及口服液瓶等。
- 分托机构专用于整列塑料托盒的自动分托使用，采用整体式负压吸附原理，分托速度快、不易出现双托且对托盒无损伤等。
- 入托模具采用 S 型轨道缓存圆瓶，结构简单，更换规格及清洁方便；圆瓶经 S 型轨道自由落体，无挤压，能有效保护圆瓶及标签。
- 托盒经过多道护栏的校正进入夹托机构，能保证托盒输送的平稳及入托的稳定。
- 贴标主机头为三段式设计，分别为供标、拉标和底纸回收机构，每个机构都由单独的电机控制，确保标签传送的快速与稳定，最快出标速度能达到 95m/min，且出标精度能达到 $\pm 0.5\text{mm}$ 。
- 使用螺杆实现分瓶，与输送机构使用同一个动力，实现机械同步运行，不易出现卡瓶、缺瓶和破瓶的现象，确保设备稳定运行。
- 轮附皮带采用同步带包海绵，运行速度平稳且缓冲性能好，能使标签附着更加牢固且不易破瓶。
- 触控式人机操作界面，出现异常可在人机界面上显示并引导故障排除，操作简单，任何人皆可快速使用本设备。具备配方选择及保存功能，更换不同规格产品时无需重新设定，直接调用配方即可，大大提高工作效率。（可选配具备审计追踪及电子签名的操作软件）

- The machine is designed for horizontal labeling on round bottles, tray separation and placing bottles into tray, including vials, ampoules and oral liquid bottles of various specifications.
- The tray separation device is specially used to separate the plastic trays in one line automatically. It adopts the integral negative pressure suction principle. With fast separation speed, but low double trays incidence, and no damage to the trays.
- The molding adopts S-shaped track for buffering the round bottles during placing bottles into tray, the molding structure is simple and easy for changing format and cleaning. The round bottles fall freely through the S-shaped track without extrusion, which can protect the round bottles and labels effectively.
- The trays enter the clamping device after being corrected by multiple guardrails, which can ensure the smooth transportation of the tray with bottles inside.
- The labeling main head is three-stage device design, which is feed label device, drag label device and paper collection device. Each device is controlled by an independent motor to ensure fast and stable label transmission. The maximum label out-feed speed can be 95 m/min. The labeling accuracy can get $\pm 0.5\text{ mm}$.
- The machine adopts the screw auger to separate the bottles, and the screw auger will share same motor as conveyor device to realize the mechanical synchronization running. In this way, the jamming, missing, and breakage of the bottles are highly reduced, and the machine could be running much more stable.



常用适用瓶型和托盒
Common bottle type and box type



技术参数 | Technical Parameters

贴标机主要参数 Labeling machine technical parameters			
适用瓶子直径 Bottle diameter	Ø10-24 mm 或 (or) Ø16-30 mm	总重量 Total weight	500 kg
适用瓶型 Bottle type	安瓿瓶、口服液瓶及西林瓶等小圆瓶 Ampoule, oral liquid bottle, vial and etc.	设备外形尺寸 (L*W*H) Overall size (L*W*H)	5336*1710*1686 mm
贴标速度 Labeling speed	0-500 瓶 / 分 0-500 bottles/min	托盒材质 Tray material	药用 PVC Medicinal PVC
分托速度 Tray separation speed	0-150 托 / 分 0-150 trays/min	托盒材质厚度 Tray thickness	0.25-0.45 mm
贴标精度 Labeling accuracy	$\pm 0.5\text{ mm}$ (包材误差除外) $\pm 0.5\text{ mm}$ (excluding packaging error)	托盒尺寸 Tray size	长度: 30-200 mm 宽度: 30-140 mm Length: 30-200 mm width: 30-140 mm
压缩空气耗气量 Compressed air consumption	0.5 MPa, 500 L/min	托盒支数 Bottle quantity/tray	≥ 2 支 ≥ 2 bottles
电源 Power supply	AC220 V, 50 Hz/60 Hz	托盒边缘宽度 Tray rim width	3-5 mm
功率 Power	5 kW	托盒槽深度 Tray groove depth	最大不超过瓶身直径 2 mm Not exceeding 2 mm bottle diameter

设备特点 | Machine Feature



入料机构
Infeed device

S型入托轨道
S-shaped track for bottles into tray

螺杆分瓶
Screw auger for bottle separation

轮附机构
Spoke wheel device

- The spoke-wheel belt adopts the synchronous belt wrap sponge, which is running smooth with good buffering performance, it can make the label attachment firmer and reduce the risk to break the bottle.
- With touch screen interface. The abnormal can be displayed on the HMI interface and guide troubleshooting. The operation is simple and anyone can quickly learn and use the machine. It is equipped with recipe selection and saving functions, there is no need to reset any parameters when change formats, and the recipe can be directly invoked, greatly improving work efficiency (optional operating software with audit trail and electronic signature to meet FDA 21 CFR Part 11 requirements).



Y-500 贴标机

带防护罩卧式圆瓶贴标机

Y-500 Automatic labeling machine

Horizontal Round Bottle Labeling Machine With Protective Cover

功能描述 | Machine Description

- 专用于圆瓶的卧式高速贴标使用，主要针对安瓿瓶与口服液瓶的贴标。
- 设备采用整体式防护罩，设备运行过程中开启任何一扇防护门均可报警停机。
- 用户根据需求可选配在线打印机、字符检测机构、漏贴检测机构及收料平台等。
- 贴标主机头为三段式设计，分别为供标、拉标和底纸回收机构，每个机构都由单独的电机控制，确保标签传送的快速与稳定，最快出标速度能达到 95m/min，且出标精度能达到 $\pm 0.5\text{mm}$ 。
- 使用螺杆实现分瓶，与输送机构使用同一个动力，实现机械同步运行，不易出现卡瓶、缺瓶和破瓶的现象，确保设备稳定运行。
- 轮附皮带采用同步带包海绵，运行速度平稳且缓冲性能好，能使标签附着更加牢固且不易破瓶。
- 触控式人机操作界面，出现异常可在人机界面上显示并引导故障排除，操作简单，任何人皆可快速使用本设备。具备配方选择及保存功能，更换不同规格产品时无需重新设定，直接调用配方即可，大大提高工作效率。（可选配具备审计追踪及电子签名的操作软件）

- The machine is designed for horizontal high-speed labeling on round bottles, including ampoules, and oral liquid bottles.
- The machine adopts the integrated protective cover. Machine will generate alarm and stop if any protective door is opened during running.
- Online printer device, printing detection device, miss labeling detection device and receiving platforms can be options according to customer requirement.
- The labeling main head is three-stage device design, which is feed label device, drag label device and paper collection device. Each device is controlled by an independent motor to ensure fast and stable label transmission. The maximum label out-feed speed can be 95 m/min. The labeling accuracy can get $\pm 0.5\text{ mm}$.
- The machine adopts the screw auger to separate the bottles, and the screw auger will share same motor as conveyor device to realize the mechanical synchronization running. In this way, the jamming, missing, and breakage of the bottles are highly reduced, and the machine could be running much more stable.
- The spoke-wheel belt adopts the synchronous belt wrap sponge, which is running smooth with good buffering performance, It can make the label attachment firmer and reduce the risk to break the bottle.
- With touch screen interface. The abnormal can be displayed on the HMI interface and guide troubleshooting. The operation is simple and anyone can quickly learn and use the machine. It is equipped with recipe selection and saving functions, there is no need to reset any parameters when change formats, and the recipe can be directly invoked, greatly improving work efficiency (optional operating software with audit trail and electronic signature to meet FDA 21 CFR Part 11 requirements).



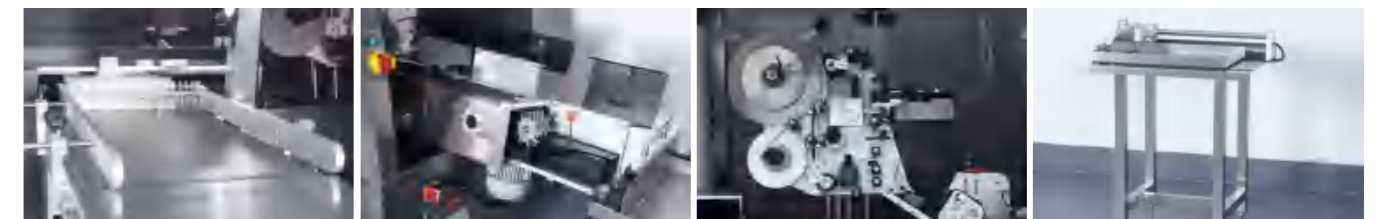
常用适用瓶型
Commonly used bottle type



技术参数 | Technical Parameters

贴标机主要参数 Labeling machine technical parameters			
适用瓶子直径 Bottle diameter	Ø10-24 mm 或 (or) Ø16-30 mm	压缩空气耗气量 Compressed air consumption	0.5 MPa, 300 L/min (配热烫印打印机) (equipped with hot stamping printer)
适用瓶型 Bottle type	安瓿瓶、口服液瓶及西林瓶等小圆瓶 Ampoule, oral liquid bottle, vial and etc.	总重量 Total weight	400 kg
贴标速度 Labeling speed	0-500 瓶 / 分 0-500 bottles/min	标准设备外形尺寸 (L*W*H) Overall size (L*W*H)	2650*1710*1650 mm
贴标精度 Labeling accuracy	$\pm 0.5\text{ mm}$ (包材误差除外) $\pm 0.5\text{ mm}$ (excluding packaging error)	防护罩材质 Protective cover material	可选亚克力或钢化玻璃 Acrylic or tempering glass
贴标合格率 Labeling pass rate	> 99.99%	适应标签材质 Label material	透明标签、铜板纸及 PE 等 Transparent label, coated paper, PE and etc.
功率 Power	4 kW	适应标签卷内径 Label roll inner diameter	Ø76 mm
电源 Power supply	AC220 V, 50 Hz/60 Hz	最大标签卷外径 Max. label roll outer diameter	Ø400 mm

设备特点 | Machine Feature



入料机构
Infeed device

翻转机构
Flip mechanism

贴标主机头
Labeling head

收料平台
Receiving platform



Y-500 贴标机

卧式圆瓶贴标机

Y-500 Automatic labeling machine

Horizontal Round Bottle Labeling Machine



常用适用瓶型
Commonly used bottle type

- The machine is designed for horizontal high-speed labeling on round bottles, including ampoules, and oral liquid bottles.
- The labeling main head is three-stage device design, which is feed label device, drag label device and paper collection device. Each device is controlled by an independent motor to ensure fast and stable label transmission. The maximum label out-feed speed can be 95 m/min. The labeling accuracy can get ± 0.5 mm.
- The machine adopts the screw auger to separate the bottles, and the screw auger will share same motor as conveyor device to realize the mechanical synchronization running. In this way, the jamming, missing, and breakage of the bottles are highly reduced, and the machine could be running much more stable.
- The spoke-wheel belt adopts the synchronous belt wrap sponge, which is running smooth with good buffering performance, It can make the label attachment firmer and reduce the risk to break the bottle.
- With touch screen interface, the abnormal can be displayed on the HMI interface and guide troubleshooting. The operation is simple and anyone can quickly learn and use the machine. It is equipped with recipe selection and saving functions, there is no need to reset any parameters when change formats, and the recipe can be directly invoked, greatly improving work efficiency (optional operating software with audit trail and electronic signature to meet FDA 21 CFR Part 11 requirements).

技术参数 | Technical Parameters

贴标机主要参数 Labeling machine technical parameters			
适用瓶子直径 Bottle diameter	Ø10-24 mm 或 (or) Ø16-30 mm	压缩空气耗气量 Compressed air consumption	0.5 MPa, 300 L/min (配热烫印打印机) (equipped with hot stamping printer)
适用瓶型 Bottle type	安瓿瓶、口服液瓶及西林瓶等小圆瓶 Ampoule, oral liquid bottle, vial and etc.	总重量 Total weight	400 kg
贴标速度 Labeling speed	0-500 瓶 / 分 0-500 bottles/min	标准设备外形尺寸 (L*W*H) Overall size (L*W*H)	2650*1710*1650 mm
贴标精度 Labeling accuracy	± 0.5 mm (包材误差除外) ± 0.5 mm (excluding packaging error)	防护罩材质 Protective cover material	可选亚克力或钢化玻璃 Acrylic or tempering glass
贴标合格率 Labeling pass rate	> 99.99 %	适应标签材质 Label material	透明标签、铜板纸及 PE 等 Transparent label, coated paper, PE and etc.
功率 Power	4 kW	适应标签卷内径 Label roll inner diameter	Ø76 mm
电源 Power supply	AC220 V, 50 Hz/60 Hz	最大标签卷外径 Max. label roll outer diameter	Ø400 mm

功能描述 | Machine Description

- 专用于圆瓶的卧式高速贴标使用，主要针对安瓿瓶与口服液瓶的贴标。
- 贴标主机头为三段式设计，分别为供标、拉标和底纸回收机构，每个机构都由单独的电机控制，确保标签传送的快速与稳定，最快出标速度能达到 95m/min，且出标精度能达到 ± 0.5 mm。
- 使用螺杆实现分瓶，与输送机构使用同一个动力，实现机械同步运行，不易出现卡瓶、缺瓶和破瓶的现象，确保设备稳定运行。
- 轮附皮带采用同步带包海绵，运行速度平稳且缓冲性能好，能使标签附着更加牢固且不易破瓶。
- 触控式人机操作界面，出现异常可在人机界面上显示并引导故障排除，操作简单，任何人皆可快速使用本设备。具备配方选择及保存功能，更换不同规格产品时无需重新设定，直接调用配方即可，大大提高工作效率。（可选具备审计追踪及电子签名的操作软件）

设备特点 | Machine Feature



轮附机构
Wheel attachment mechanism

翻转机构
Flip mechanism

输送机构
Conveyor

螺杆进料机构
Screw feed mechanism



Y-400 贴标机

直线立式圆瓶贴标机

Y-400 Automatic labeling machine
Linear Vertical Round Bottle Labeling Machine



常用适用瓶型
Commonly used bottle type

- The machine is designed for vertical labeling on round bottles, including vials, syrup bottles, eye drop bottles.
- The labeling main head is three-stage device design, which is feed label device, drag label device and paper collection device. Each device is controlled by an independent motor to ensure fast and stable label transmission.
- It adopts the turntable feeding method, which has strong applicability, easy cleaning, and can be used for manual feeding and linkage running.
- It is equipped with the differential bottle dividing device, and no need to replace any change parts, but only adjust the position of each device, the screw auger bottle dividing device can also be an option according to customer requirement.
- The spoke-wheel belt adopts the synchronous belt, spoke wheel press board is affixed with buffering sponge, which is running smooth with good buffering performance, It can make the label attachment firmer and reduce the risk to break the bottle.
- With touch screen interface, the abnormal can be displayed on the HMI interface and guide troubleshooting. The operation is simple and anyone can quickly learn and use the machine. It is equipped with recipe selection and saving functions, there is no need to reset any parameters when change formats, and the recipe can be directly invoked, greatly improving work efficiency (optional operating software with audit trail and electronic signature to meet FDA 21 CFR Part 11 requirements).

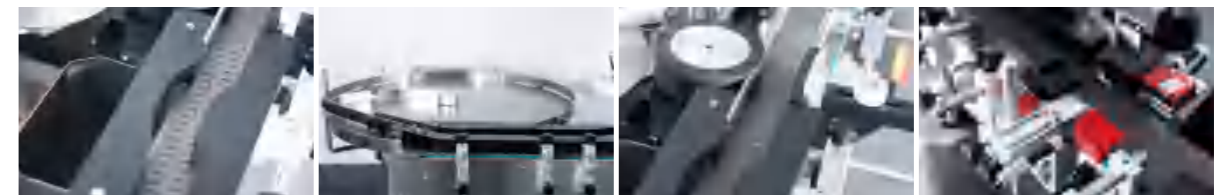
技术参数 | Technical Parameters

贴标机主要参数 Labeling machine technical parameters			
适用瓶子直径 Bottle diameter	Ø16-70 mm	压缩空气耗气量 Compressed air consumption	0.5 MPa, 300 L/min (配热烫印打印机) (equipped with hot stamping printer)
适用瓶型 Bottle type	西林瓶、滴眼液瓶及糖浆瓶等圆瓶 Vial, eyedrop bottle, syrup bottle, and etc.	总重量 Total weight	350 kg
贴标速度 Labeling speed	0-400 瓶 / 分 0-400 bottles/min	标准设备外形尺寸 (L*W*H) Overall size (L*W*H)	2716*1333*1650 mm
贴标精度 Labeling accuracy	±0.1mm (包材误差除外) ±0.1 mm (excluding packaging error)	标签间距 Label spacing	2-4mm
贴标合格率 Labeling pass rate	> 99.99%	适应标签材质 Label material	透明标签、铜板纸及 PE 等 Transparent label, coated paper, PE and etc.
功率 Power	3.5 kW	适应标签卷内径 Label roll inner diameter	Ø76 mm
电源 Power supply	AC220 V, 50 Hz/60 Hz	最大标签卷外径 Max. label roll outer diameter	Ø400 mm

功能描述 | Machine Description

- 专用于圆瓶的立式贴标使用，包括西林瓶、糖浆瓶及滴眼剂瓶等。
- 贴标主机头为三段式设计，分别为供标、拉标和底纸回收机构，每个机构都由单独的电机控制，确保标签传送的快速与稳定。
- 采用转盘供料方式，适用性强，清洁方便，且人工上料及连线使用皆可。
- 配置差速分瓶机构时，无需更换任何规格件，只需调整各机构的位置即可；根据用户需求也可选配螺杆分瓶机构。
- 轮附皮带采用同步带，轮附压板贴缓冲海绵，运行速度平稳且缓冲性能好，能使标签附着更加牢固且不易破瓶。
- 触控式人机操作界面，出现异常可在人机界面上显示并引导故障排除，操作简单，任何人皆可快速使用本设备。具备配方选择及保存功能，更换不同规格产品时无需重新设定，直接调用配方即可，大大提高工作效率。（可选配备审计追踪及电子签名的操作软件）

设备特点 | Machine Feature



U形通道剔除倒瓶
U-shaped track to reject falling bottles

供料转盘
Infeed turntable

差速分瓶机构
Differential bottle separation device

漏贴检测及剔除机构
Miss labeling detection and rejection device



Y-200 贴标机

立式圆瓶定点定位贴标机

Y-200 Automatic labeling machine

Vertical cylindrical bottle fixed point positioning labelling machine

功能描述 | Machine Description

- 专用于圆瓶及锥度瓶的立式定点定位贴标使用。
- 贴标主机头为三段式设计，分别为供标、拉标和底纸回收机构，每个机构都由单独的电机控制，确保标签传送的快速与稳定。
- 配置差速分瓶机构时，无需更换任何规格件，只需调整各机构的位置即可；根据用户需求也可选配螺杆分瓶机构。
- 锥度瓶贴标时，配置万向调整机构，贴标主机头的位置及角度可根据产品外形与尺寸任意调整，满足不同锥度瓶的适用，同时轮附橡胶轮的角度也可调整。
- 使用气缸定点机构，动作速度快，不同规格的适用性强，更换规格快速方便。
- 轮附机构采用橡胶轮，运行速度平稳且有一定缓冲性能，能使标签附着更加牢固且不易出现气泡、褶皱等异常情况，标签定位贴标时精度高。
- 触控式人机操作界面，出现异常可在人机界面上显示并引导故障排除，操作简单，任何人皆可快速使用本设备。具备配方选择及保存功能，更换不同规格产品时无需重新设定，直接调用配方即可，大大提高工作效率。（可选配备审计追踪及电子签名的操作软件）



常用适用瓶型和托盒
Common bottle type and box type



- Specially designed for vertical fixed-point labeling of round bottles and tapered bottles.
- The labeling main head is three-stage device design, which is feed label device, drag label device and paper collection device. Each device is controlled by an independent motor to ensure fast and stable label transmission.
- It is equipped with the differential bottle dividing device, and no need to replace any change parts, but only adjust the position of each device, the screw auger bottle dividing device can also be an option according to customer requirement.
- When labeling conical flasks, the universal adjustment mechanism is configured, the position and angle of the labeling machine head can be adjusted according the shape and size of the product, meeting the requirements for different conical flasks, and the angle of the rubber wheel can also be adjusted.
- The use of cylinder positioning mechanism ensures fast operation speed and strong applicability for different specifications, and the specifications can be changed quickly and conveniently.

技术参数 | Technical Parameters

贴标机主要参数 Labeling machine technical parameters			
适用瓶子直径 Bottle diameter	Φ35-80 mm	压缩空气耗气量 Compressed air consumption	0.5 MPa, 300 L/min (配热烫印打印机) (equipped with hot stamping printer)
适用瓶型 Bottle type	圆瓶、锥度瓶等 round bottle, conical flask and etc.	总重量 Total weight	300 kg
贴标速度 Labeling speed	0-60 瓶 / 分 0-60 bottles/min	标准设备外形尺寸 (L*W*H) Overall size (L*W*H)	2580*1300*1328 mm
贴标精度 Labeling accuracy	±0.5 mm (包材误差除外) ±0.5 mm (excluding packaging error)	标签间距 Label spacing	2-4mm
贴标合格率 Labeling pass rate	> 99.99%	适应标签材质 Label material	透明标签、铜板纸及 PE 等 Transparent label, coated paper, PE and etc.
功率 Power	3 kW	适应标签卷内径 Label roll inner diameter	Ø76 mm
电源 Power supply	AC220 V, 50 Hz/60 Hz	最大标签卷外径 Max. label roll outer diameter	Ø400 mm

- The wheel attachment mechanism uses rubber wheels, which operate at a stable speed and have good buffering performance, ensuring that the labels are securely attached bubbles or wrinkles, and achieving high precision in label positioning.
- With touch screen interface, the abnormal can be displayed on the HMI interface and guide troubleshooting. The operation is simple and anyone can quickly learn and use the machine. It is equipped with recipe selection and saving functions, there is no need to reset any parameters when change formats, and the recipe can be directly invoked, greatly improving work efficiency (optional operating software with audit trail and electronic signature to meet FDA 21 CRR Part 11 requirements).

设备特点 | Machine Feature



气缸定位机构
Cylinder positioning mechanism

差速分瓶机构
Differential bottle separation device

贴标主机头
Labeling head

入料机构
Infeed device



P-280 贴标机

扁瓶、方瓶及异形瓶平面贴标机

P-280 Automatic labeling machine

Labeling Machine For Flat Bottles, Square Bottles And Special-Shaped Bottles



常用适用瓶型
Commonly used bottle type

- The machine is designed for labeling on one side /double sides /three sides of square bottles, one side / double sides of flat bottles, and one side/ double sides of round bottles. With wide scope of use and strong applicability.
- The spring-buffered pressing device is mechanically synchronized with the conveyor device to ensure that the bottles are pressed tightly and do not tilt.
- The labeling main head is three-stage device design, which is feed label device, drag label device and paper collection device. Each device is controlled by an independent motor to ensure fast and stable label transmission.
- The machine is equipped with a separation and correction device to separate the bottles and correct their positions before conveying them to the upper pressing device to ensure labeling accuracy.
- The machine is equipped with a universal adjustment device, the position and angle of the labeling head can be adjusted freely according to the bottle shape and size, making it highly adaptable.
- The brush device is used to brush the label, the angle and length of the label brushing can be adjusted to ensure that the label is affixed to the bottle without bubbles and wrinkles.
- With touch screen interface, the abnormal can be displayed on the HMI interface and guide troubleshooting. The operation is simple and anyone can quickly learn and use the machine. It is equipped with recipe selection and saving functions, there is no need to reset any parameters when change formats, and the recipe can be directly invoked, greatly improving work efficiency (optional operating software with audit trail and electronic signature to meet FDA 21 CRR Part 11 requirements).

设备特点 | Machine Feature



分离校正机构
Separation and correction device



上压机构
Upper pressing device



万向调整机构
Universal adjustment device

技术参数 | Technical Parameters

功能描述 | Machine Description

- 可贴方瓶的单面、双面及三面，扁瓶的单面、双面，圆瓶的单面、双面。使用范围广，适用性强。
- 使用弹簧缓冲上压机构，与输送机构机械同步，保证瓶子压紧的同时瓶子不倾斜。
- 贴标主机头为三段式设计，分别为供标、拉标和底纸回收机构，每个机构都由单独的电机控制，确保标签传送的快速与稳定。
- 配置分离校正机构，将产品分开间距并校正位置之后输送至上压机构，保证贴标的精度。
- 配置万向调整机构，贴标主机头的位置及角度可根据产品外形与尺寸任意调整，适用性极强。
- 采用毛刷机构刷标，刷标角度与长度可调整，保证标签贴到瓶身上无气泡与褶皱。
- 触控式人机操作界面，出现异常可在人机界面上显示并引导故障排除，操作简单，任何人皆可快速使用本设备。具备配方选择及保存功能，更换不同规格产品时无需重新设定，直接调用配方即可，大大提高工作效率。（可选配具备审计追踪及电子签名的操作软件）

贴标机主要参数 Labeling machine technical parameters

适用瓶子直径 Bottle diameter	Ø 16-80 mm	压缩空气耗气量 Compressed air consumption	0.5 MPa, 300 L/min (配热烫印打印机) (equipped with hot stamping printer)
适用瓶型 Bottle type	方瓶、扁瓶、椭圆瓶、圆瓶及其他异性瓶 Square bottle, flat bottle, oval bottle, round bottle and etc.	配置功能选择 Configuration options	可单面、双面及三面贴标，也可根据需求增加圆瓶贴标功能 Labeling on one, two, or three sides, and can also be equipped with round bottle labeling function according to customer's requirement.
适用非圆瓶尺寸 Bottle diameter	长度 20-200 mm, 宽度 15-100 mm, 高度 30-300 mm Length 20-200 mm, width 15-100 mm, height 30-300 mm	标准设备外形尺寸 (L*W*H) Overall size (L*W*H)	2800*1657*1750 mm
贴标速度 Labeling speed	0-300 瓶 / 分 0-300 bottles/min	总重量 Total weight	400 kg
贴标精度 Labeling accuracy	±1 mm (包材误差除外) ±1 mm (excluding packaging error)	适应标签材质 Label material	透明标签、铜板纸及 PE 等 Transparent label, coated paper, PE and etc.
功率 Power	4 kW	适应标签卷内径 Label roll inner diameter	Ø76 mm
电源 Power supply	AC220 V, 50 Hz/60 Hz	最大标签卷外径 Max. label roll outer diameter	Ø400 mm



P-260 贴标机

带防护罩纸盒折角贴标机

P-260 Automatic labeling machine
Carton Corner Labeling Machine With
Protective Cover



常用适用瓶型
Commonly used bottle type

- The machine is designed for corner labeling on paper cartons of various specifications, which is flexible and can meet different requirements according to customer requirement.
- The machine adopts the integrated protective cover. Machine will generate alarm and stop if any protective door is opened during running.
- The machine structure is suitable for linkage line, and convenient to connect with the up-stream and down-stream machines quickly.
- The labeling main head adopts imported high-power servo motor, with high labeling accuracy and fast speed.
- The machine is equipped with carton separation, correction and upper pressing device to ensure the accuracy of labeling and the stability of the entire machine operation.
- Miss labeling detection device can be an option according to customer requirement, either industrial camera or photoelectric detection is ok.
- It adopts a specially designed label brushing device, which is easy for adjustment and with good buffering and strong durability.
- With touch screen interface, the abnormal can be displayed on the HMI interface and guide troubleshooting. The operation is simple and anyone can quickly learn and use the machine. It is equipped with recipe selection and saving functions, there is no need to reset any parameters when change formats, and the recipe can be directly invoked, greatly improving work efficiency (optional operating software with audit trail and electronic signature to meet FDA 21 CFR Part 11 requirements).

技术参数 | Technical Parameters

贴标机主要参数 Labeling machine technical parameters			
适应纸盒尺寸范围 Carton dimension	长度 50-200 mm, 宽度 30-100 mm, 高度 15-100 mm Length 50-200 mm, width 30-100 mm, height 15-100 mm	压缩空气耗气量 Compressed air consumption	0.5 MPa, 200 L/min
贴标速度 Labeling speed	0-150 盒 / 分 0-150 cartons/min	总重量 Total weight	300 kg
贴标合格率 Labeling pass rate	> 99.99%	标准设备外形尺寸 (L*W*H) Overall size (L*W*H)	1800*730*1615 mm
贴标精度 Labeling accuracy	±1 mm (包材误差除外) ±1 mm (excluding packaging error)	适应标签材质 Label material	透明标签、铜板纸及 PE 等 Transparent label, coated paper, PE and etc.
功率 Power	2.5 kW	适应标签卷内径 Label roll inner diameter	Ø76 mm
电源 Power supply	AC220 V, 50 Hz/60 Hz	最大标签卷外径 Max. label roll outer diameter	Ø300 mm

功能描述 | Machine Description

- 专用于各种规格纸盒的双面折角贴标使用, 根据用需求可灵活布局, 满足不同需求的折角贴标使用。
- 设备采用整体式防护罩, 设备运行过程中开启任何一扇防护门均可报警停机。
- 设备的结构设计非常便于连线使用, 与前后段设备对接方便快捷。
- 贴标主机头采用进口大功率伺服电机, 出标精度高, 速度快。
- 配置分盒、校正及上压机构, 保证贴标的精度及整机运行的稳定性。
- 用户可选配漏贴检测机构, 采用工业相机与光电检测的方式均可。
- 采用特别设计的刷标机构, 调整方便, 缓冲性好, 且耐用性强。
- 触控式人机操作界面, 出现异常可在人机界面上显示并引导故障排除, 操作简单, 任何人皆可快速使用本设备。具备配方选择及保存功能, 更换不同规格产品时无需重新设定, 直接调用配方即可, 大大提高工作效率。(可选配具备审计追踪及电子签名的操作软件)

设备特点 | Machine Feature



分离校正机构
Separation and correction device

上压机构
Upper pressing device

喷墨机
Inkjet printer

人机界面
HMI



P-260 贴标机

纸盒折角贴标机

P-260 Automatic labeling machine

Carton Corner Labeling Machine

功能描述 | Machine Description

- 专用于各种规格的纸盒折角贴标使用，根据用需求可灵活布局，满足不同需求的折角贴标使用。
- 设备的结构设计非常便于连线使用，与前后段设备对接方便快捷。
- 贴标主机头采用进口大功率伺服电机，出标精度高，速度快。
- 配置分盒、校正及上压机构，保证贴标的精度及整机运行的稳定性。
- 用户可选配漏贴检测机构，采用工业相机与光电检测的方式均可。
- 采用特别设计的刷标机构，调整方便，缓冲性好，且耐用性强。
- 触控式人机操作界面，出现异常可在人机界面上显示并引导故障排除，操作简单，任何人皆可快速使用本设备。具备配方选择及保存功能，更换不同规格产品时无需重新设定，直接调用配方即可，大大提高工作效率。（可选具备审计追踪及电子签名的操作软件）

- The machine is designed for corner labeling on paper cartons of various specifications, which is flexible and can meet different requirements according to customer requirement.
- The machine structure is suitable for linkage line, and convenient to connect with the up-stream and down-stream machines quickly.
- The labeling main head adopts imported high-power servo motor, with high labeling accuracy and fast speed.
- The machine is equipped with carton separation, correction and upper pressing device to ensure the accuracy of labeling and the stability of the entire machine operation
- Miss labeling detection device can be an option according to customer requirement, either industrial camera or photoelectric detection is ok.
- It adopts a specially designed label brushing device, which is easy for adjustment and with good buffering and strong durability.
- With touch screen interface, the abnormal can be displayed on the HMI interface and guide troubleshooting. The operation is simple and anyone can quickly learn and use the machine. It is equipped with recipe selection and saving functions, there is no need to reset any parameters when change formats, and the recipe can be directly invoked, greatly improving work efficiency (optional operating software with audit trail and electronic signature to meet FDA 21 CRR Part 11 requirements).



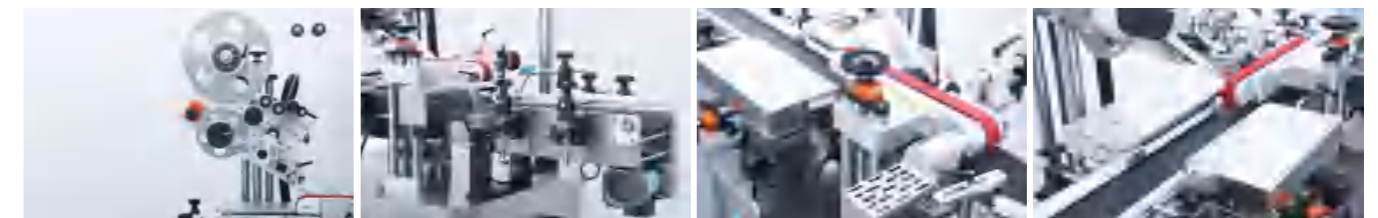
常用适用瓶型
Commonly used bottle type



技术参数 | Technical Parameters

贴标机主要参数 Labeling machine technical parameters			
适应纸盒尺寸范围 Carton dimension	长度 20-200 mm, 宽度 15-100 mm, 高度 30-300 mm Length 20-200 mm, width 15-100 mm, height 30-300 mm	压缩空气耗气量 Compressed air consumption	0.5 MPa, 200 L/min
贴标速度 Labeling speed	0-150 盒 / 分 0-150 cartons/min	总重量 Total weight	300 kg
贴标精度 Labeling accuracy	±1mm (包材误差除外) ±1 mm (excluding packaging error)	设备外形尺寸 (L*W*H) Overall size (L*W*H)	1800*730*1615 mm
贴标合格率 Labeling pass rate	> 99.99%	适应标签材质 Label material	透明标签、铜板纸及 PE 等 Transparent label, coated paper, PE and etc.
功率 Power	5 kW	适应标签卷内径 Label roll inner diameter	Ø76 mm
电源 Power supply	AC220 V, 50 Hz/60 Hz	最大标签卷外径 Max. label roll outer diameter	Ø300 mm

设备特点 | Machine Feature



简易贴标头
Simple labeling header

输送机构
Conveyor mechanism

分盒及上压机构
Carton separation and upper pressing device



P-120 贴标机

带防护罩 BFS 贴标机

P-120 Automatic labeling machine

BFS labelling machine with protective cover

功能描述 | Machine Description

- 专用于各种规格多连装塑瓶安瓿的上平面贴标使用。
- 设备采用整体式防护罩，设备运行过程中开启任何一扇防护门均可报警停机。用户根据需求可选配在线打印机、字符检测机构、漏贴检测机构及进料机构等。
- 贴标主机头为三段式设计，分别为供标、拉标和底纸回收机构，每个机构都由单独的电机控制，确保标签传送的快速与稳定。
- 设备可根据需求配置不同的打印机，包含激光、热转印及喷印等，满足不同需求使用。
- 输送链板上安装根据产品尺寸设计的定位块，保证输送、贴标及检测功能的稳定性。
- 触控式人机操作界面，出现异常可在人机界面上显示并引导故障排除，操作简单，任何人皆可快速使用本设备。具备配方选择及保存功能，更换不同规格产品时无需重新设定，直接调用配方即可，大大提高工作效率。（可选具备审计追踪及电子签名的操作软件）
- Specially used for top surface labeling of various sizes of multi-connected plastic bottle ampoules.
- The machine adopts the integrated protective cover. Machine will generate alarm and stop if any protective door is opened during running. Online printer device, printing detection device, miss labeling detection device and Feeding mechanism can be options according to customer requirement.
- The labeling main head is three-stage device design, which is feed label device, drag label device and paper collection device. Each device is controlled by an independent motor to ensure fast and stable label transmission.
- The equipment can be configured with different printers according to requirements, including laser, thermal transfer, and inkjet printing, meeting various usage needs
- Positioning blocks designed according to product size are installed on the conveying chain plate to ensure the stability of conveying, labeling, and detection functions
- With touch screen interface, the abnormal can be displayed on the HMI interface and guide troubleshooting. The operation is simple and anyone can quickly learn and use the machine. It is equipped with recipe selection and saving functions, there is no need to reset any parameters when change formats, and the recipe can be directly invoked, greatly improving work efficiency (optional operating software with audit trail and electronic signature to meet FDA 21 CRR Part 11 requirements).



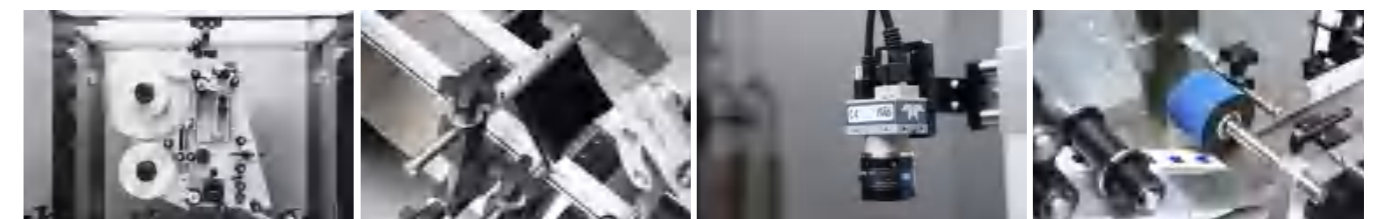
常用适用瓶型
Commonly used bottle type



技术参数 | Technical Parameters

贴标机主要参数 Labeling machine technical parameters			
适应产品尺寸范围 Bottle diameter	长度 30-120mm、宽度 30-110mm、高度 10-50mm Length 30-120 mm, width 30-110 mm, height 10-50mm	压缩空气耗气量 Compressed air consumption	0.5 MPa, 200 L/min
贴标速度 Labeling speed	0-150 板 / 分 0-150 plank/min	总重量 Total weight	350 kg
贴标精度 Labeling accuracy	±1 mm (包材误差除外) ±1 mm (excluding packaging error)	标准设备外形尺寸 (L*W*H) Overall size (L*W*H)	3417*1765*2300 mm
贴标合格率 Labeling pass rate	> 99.99%	适应标签材质 Label material	透明标签、铜板纸及 PE 等 Transparent label, coated paper, PE and etc.
功率 Power	3.5 kW	适应标签卷内径 Label roll inner diameter	Ø76 mm
电源 Power supply	AC220 V, 50 Hz/60 Hz	最大标签卷外径 Max. label roll outer diameter	Ø400 mm

设备特点 | Machine Feature



贴标主机头
Labeling head

毛刷定位
Positioning of the brush

工业相机检测机构
Industrial camera detection device

刷标机构
Label brushing agency



产品配件

Accessories photo



转盘 Φ 800mm
Turntable

包装台
Packaging table



转盘 Φ 1200mm
Turntable

相关产品及配件



相关产品及配件信息，请联系客服咨询。

信守承诺 | 追求卓越

服务热线 | 021-57671566

依托 20 多年专业技术研发，沉淀凝练系统解决方案，
为合作客户提供定制化的专项服务。



扫码关注·了解更多

竭诚欢迎来访
上海乐伯宁科技参观交流

期待与您的深度合作

外贸部联系人 :April
邮箱 :consung004@consung.com.cn

手机 : 0086 15021555215

携手并进 共创美好未来